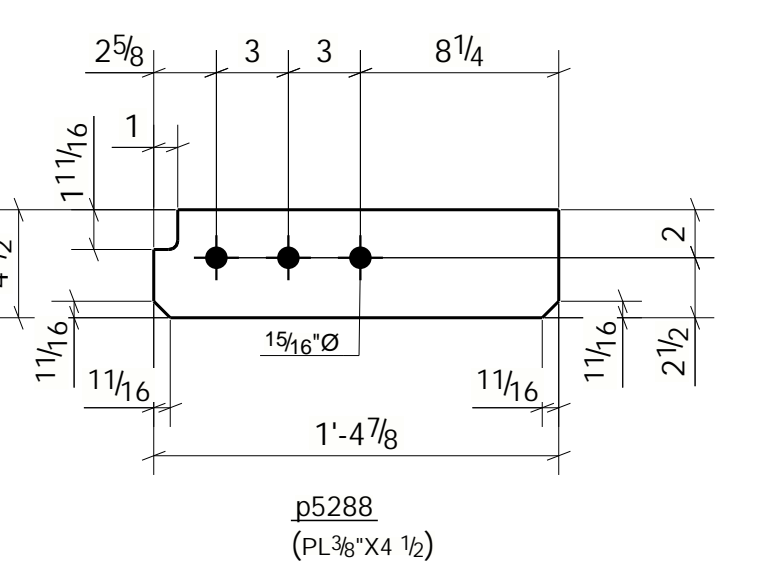
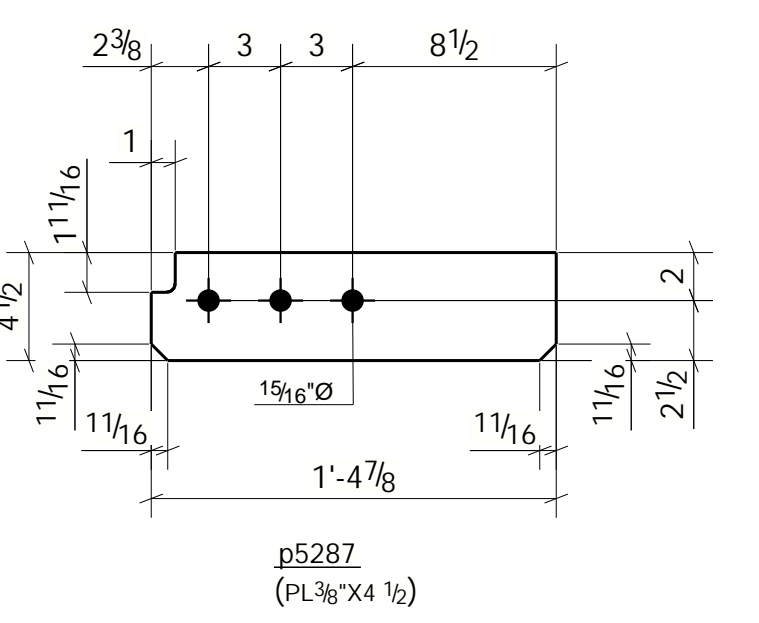
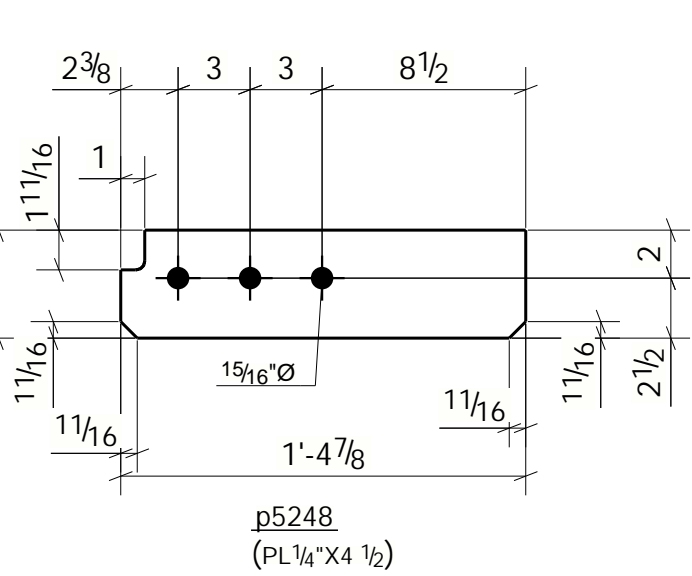
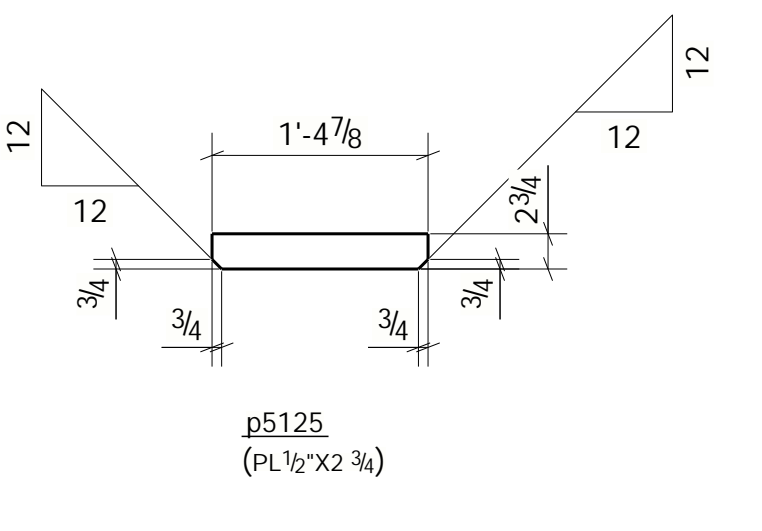
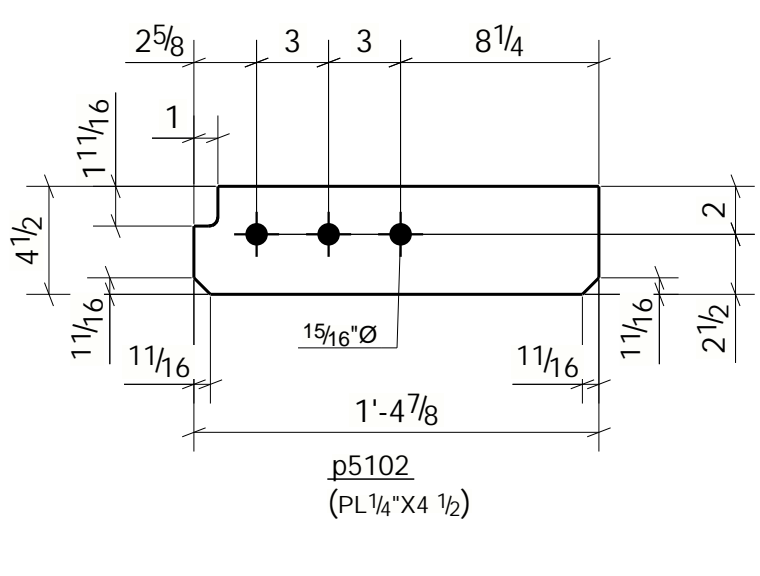
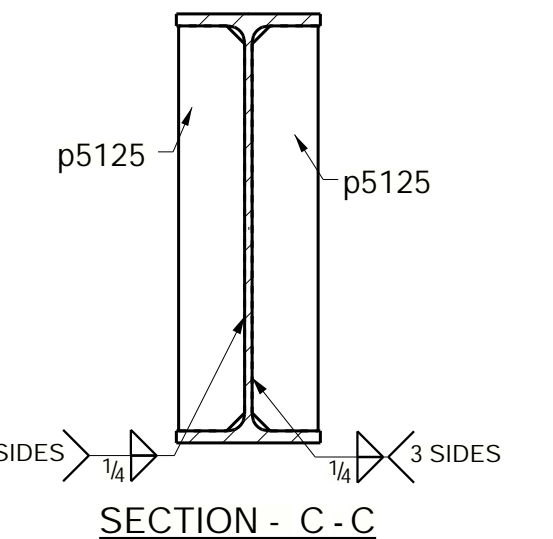
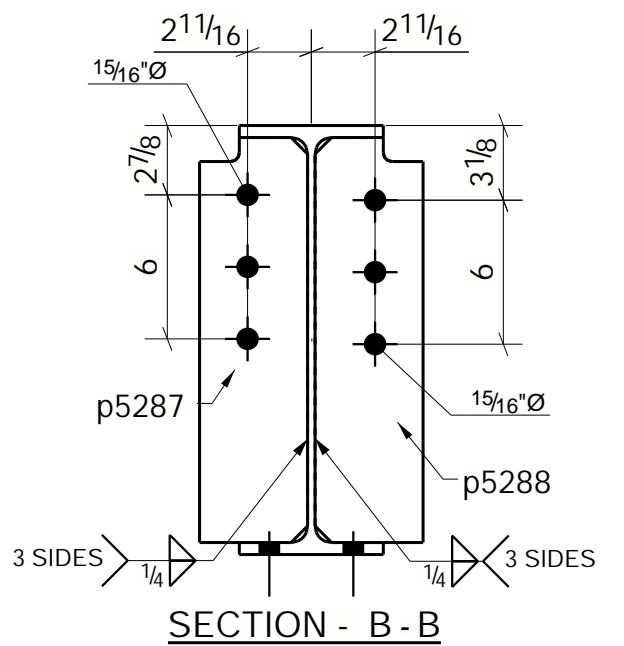
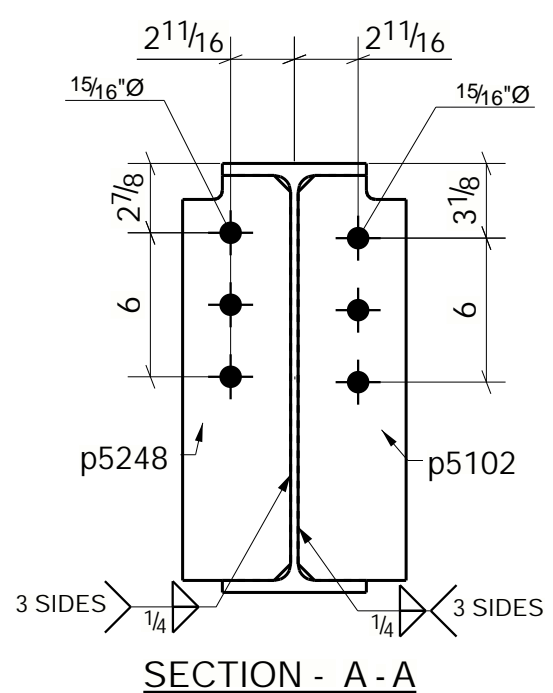
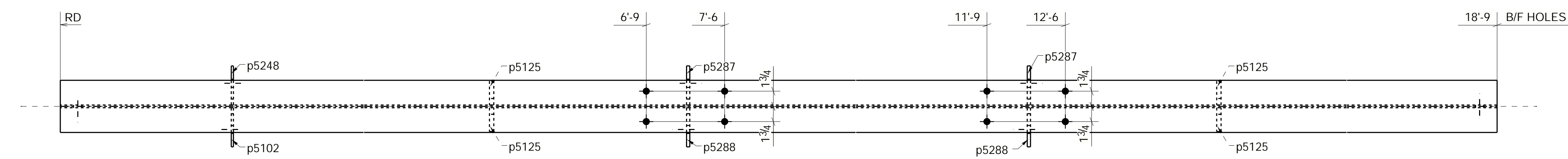
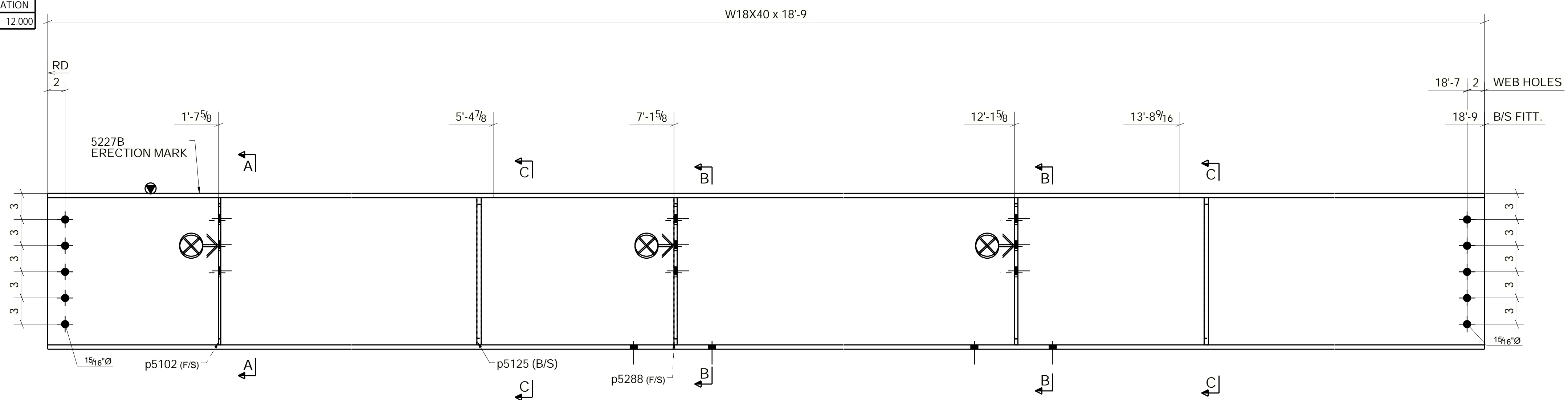


ASSEMBLIES LOCATION		
#	E SHEET	ELEVATION
1	E5006	12.000



- SYMBOLOLOGY**
- N/S - NEAR SIDE MARK
 - F/S - FAR SIDE MARK
 - B/S - NEAR SIDE BOLT MARK
 - E.I. - EXCEPT INDICATED
 - - NEAR SIDE HOLE
 - ⊖ - FAR SIDE HOLE
 - EL - LEVEL
 - W.P. - WORK POINT
 - CL - CENTER LINE
 - ⊗ - CONNECTING SIDE
 - RD - RUN DIMENSION

ONE - BEAM - 5227B

REV.	DATE	DESCRIPTION
A		FOR INFORMATION
-		FOR APPROVAL



CUSTOMER LOGOTYPE

NOTES:

REFERENCE DRAWINGS:

- FOR INFORMATION
- PRELIMINARY
- FOR APPROVAL
- FOR FABRICATION
- FINAL
- ASBUILT

THIS CONFIDENTIAL DOCUMENT IS THE PROPERTY OF XXXXX AND SHALL NOT BE GIVEN, COMMUNICATED, COPIED OR REPRODUCED EXCEPT WITH OUR WRITTEN PERMISSION.

PROJECT:	BEAMS @ LOW ROOF	DRAWN BY:	REVISED BY:
AREA:		ISSUE DATE:	DATE:
CLIENT:		ESCALA: NO	PRIORITY: 0
DESCRIPTION:	BEAM	DRAWING No./DWG No.	REV. A
		5227B	

SHIPPING MARK	PIECE MARK	BILL OF MATERIAL				PAINTING AREA (sq.ft)	TOTAL WEIGHT (Lb)	NOTES
		QTY.	DESCRIPTION	GRADE	LENGTH			
5227B		1	BEAM		18'-9"			
	20065	1	W18X40	A992	18'-9"	92.54	752.96	
	p5102	1	PL 1/4" X 4 1/2"	A36	1'-4 7/8"	1.10	5.24	
	p5125	4	PL 1/2" X 2 3/4"	A36	1'-4 7/8"	3.08	26.00	
	p5248	1	PL 1/4" X 4 1/2"	A36	1'-4 7/8"	1.10	5.24	
	p5287	2	PL 3/8" X 4 1/2"	A36	1'-4 7/8"	2.27	15.71	
	p5288	2	PL 3/8" X 4 1/2"	A36	1'-4 7/8"	2.27	15.71	
		10	TOR Ø 3/8" X 2"	A325SC				
		8	TOR Ø 3/4" X 2 1/4"	A325N				
						102.35	820.84	

NOTES:
ALL COPES MUST BE ROUNDED TO 3/8" RADIUS.