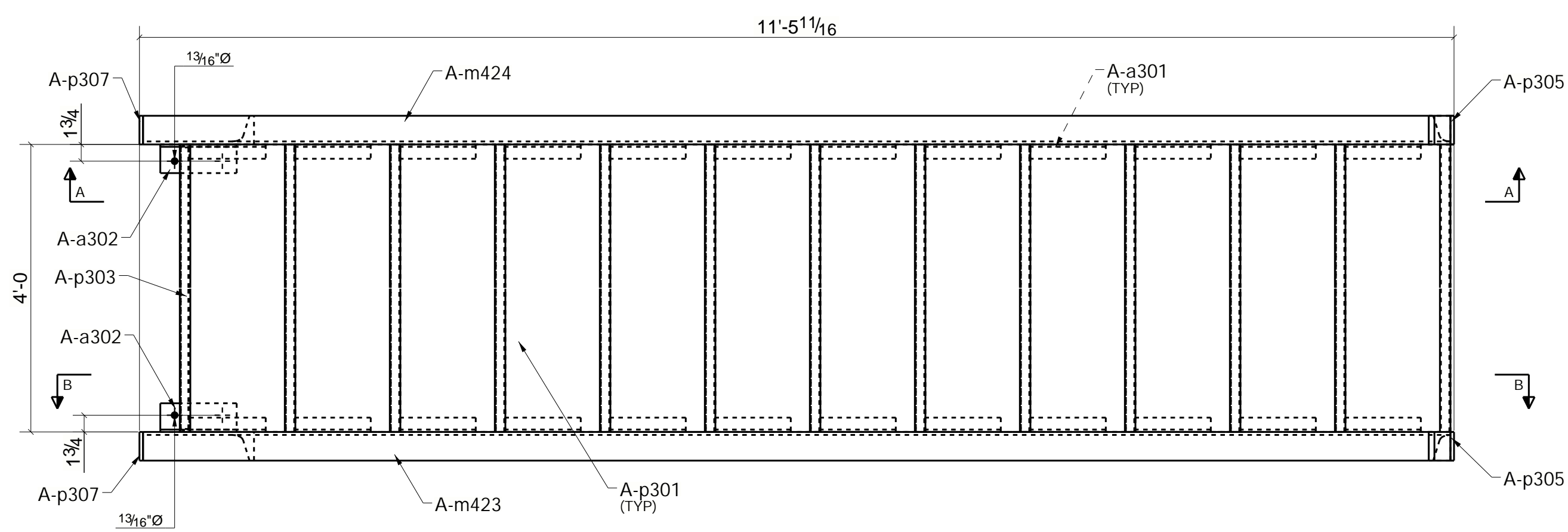
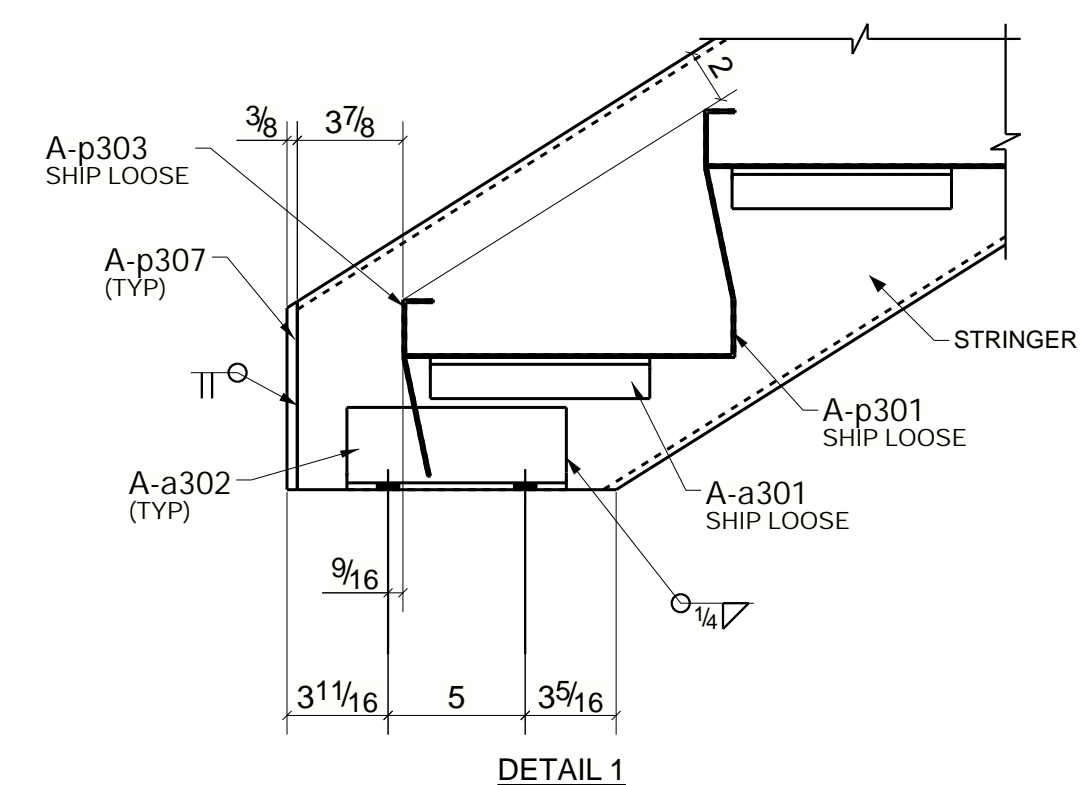


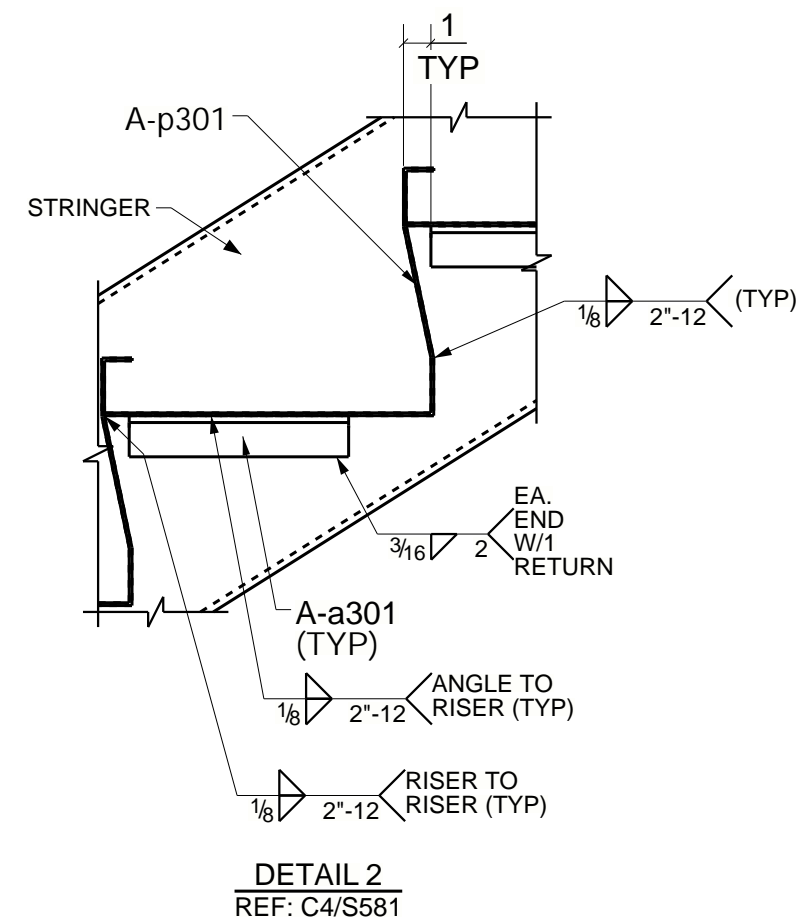
ASSEMBLIES LOCATION			
#	E SHEET	GRID LOC	ELEVATION
1	E301	1-2/C-D	-0.000



PLAN VIEW



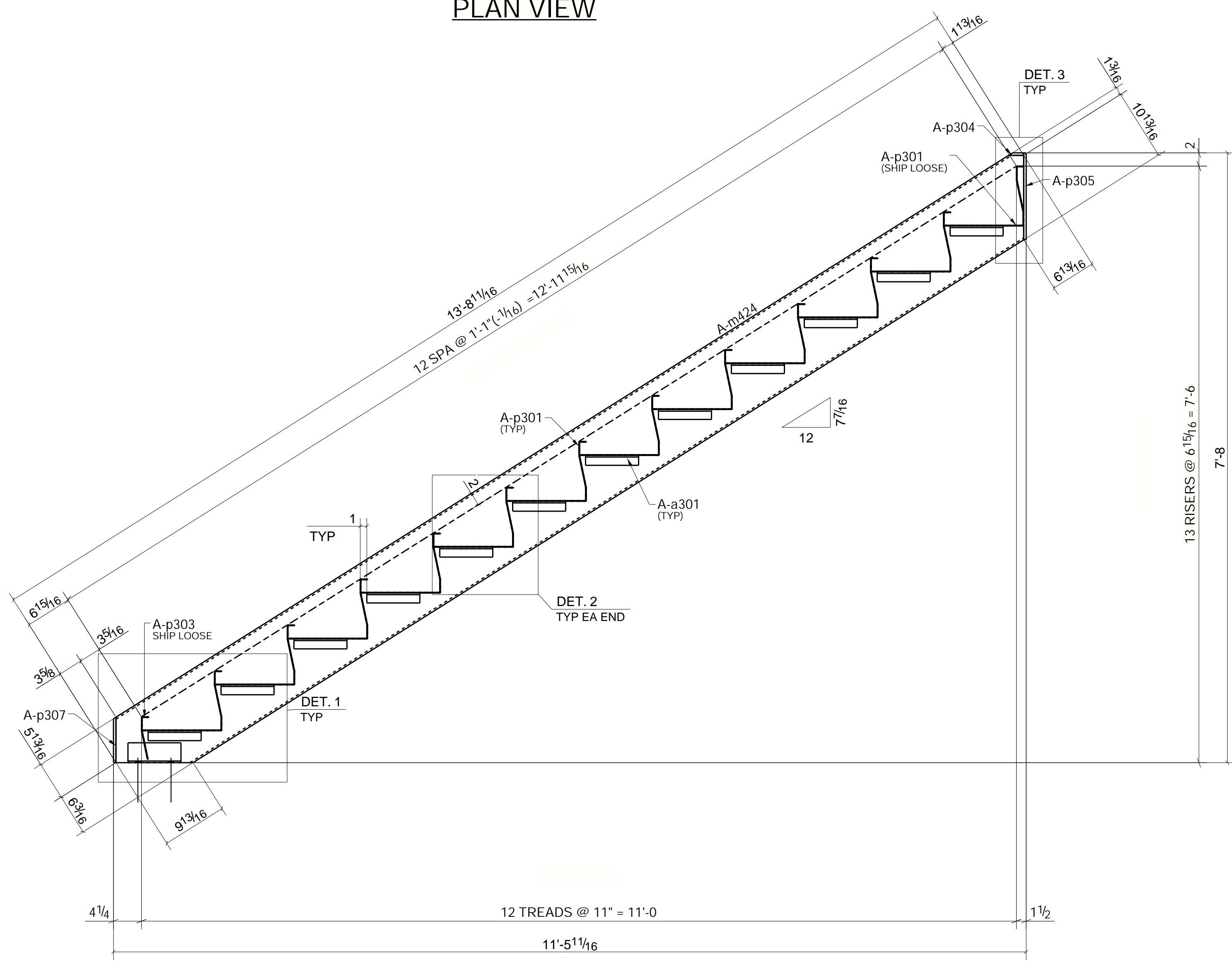
DETAIL 1



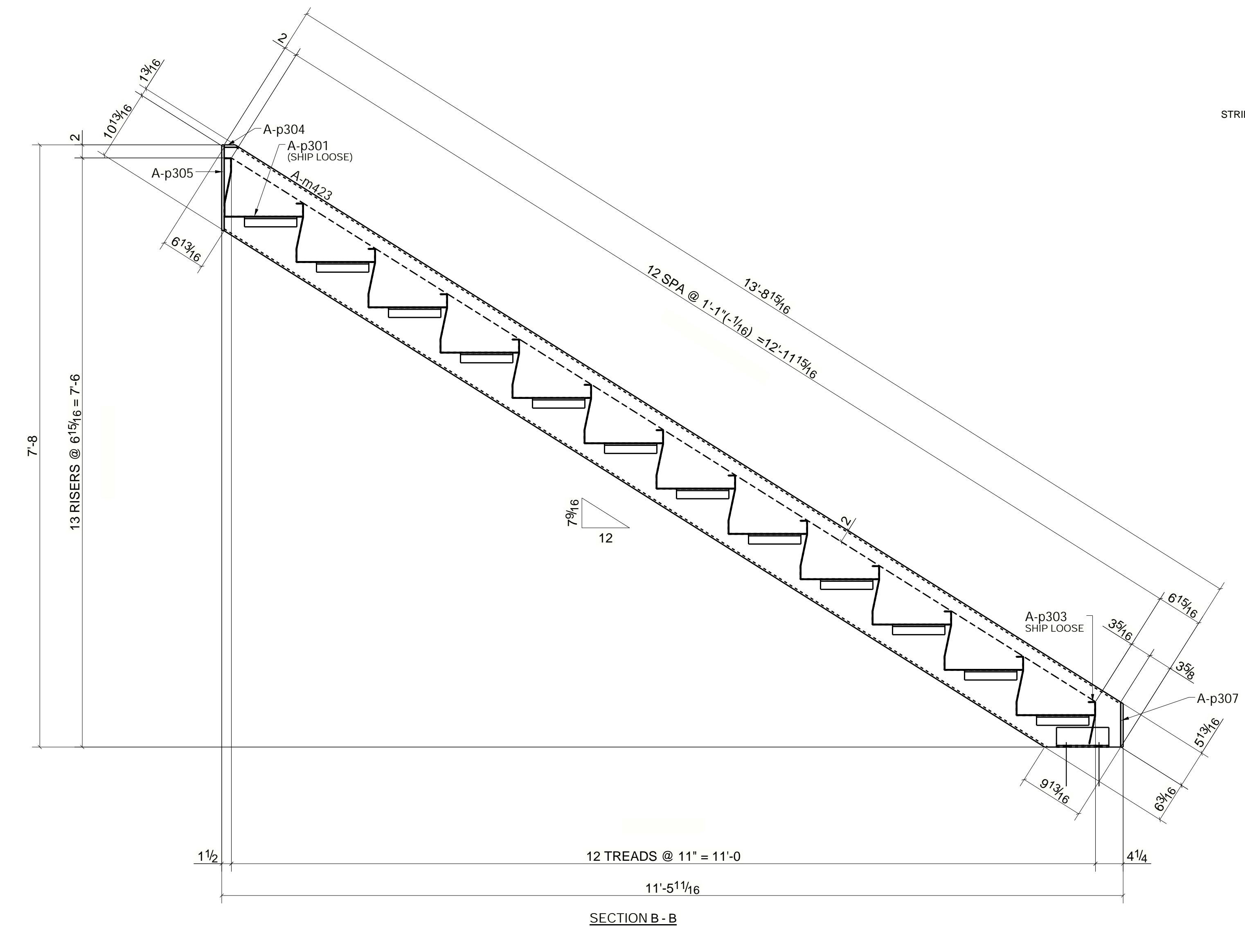
DETAIL 2
REF: C4/S581

SHIPPING MARK	PIECE MARK	QTY.	BILL OF MATERIAL			PAINTING AREA (sq.ft)	TOTAL WEIGHT (Lb)	NOTES
			DESCRIPTION	GRADE	LENGTH			
A-S301		1	STAIR		13'-9 9/16"			
	A-a301	24	L1-1/2X1-1/2X1/4	A36	0'-8"	8.23	37.46	
	A-a302	2	L3X3X1/4	A36	0'-8"	1.37	6.53	
	A-m423	1	C12X20.7	A36	13'-8 11/16"	37.77	284.01	
	A-m424	1	C12X20.7	A36	13'-8 11/16"	37.77	284.01	
	A-p301	12	PL1/8"X21 13/16"	A36	4'-0"	177.39	365.47	
	A-p303	1	PL1/8"X7 3/8"	A36	4'-0"	5.06	10.34	
	A-p304	2	PL3/8"X2 1/4"	A36	0'-3"	0.23	1.26	
	A-p305	2	PL3/8"X3"	A36	1'-1 1/8"	1.26	8.37	
	A-p307	2	PL3/8"X3"	A36	0'-6 7/8"	0.67	4.30	
		4	TOR Ø3/4"X6 1/4"	HILTI***				
						269.77	1001.77	

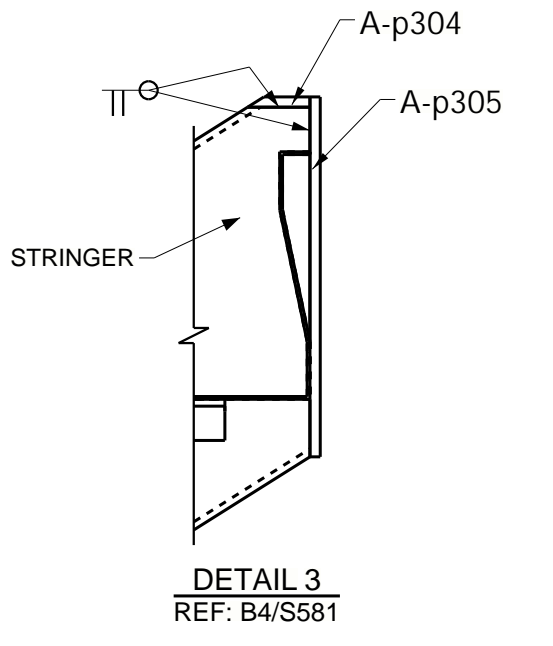
GALVANIZATION NOTES:
 1.- HOT DIP GALVANIZE.
 2.- SEAL WELDS IN ADDITION TO ALL WELDS SHOWN.
 3.- PROVIDE WEEP HOLES AS REQUIRED FOR GALVANIZATION.
 4.- GRIND ALL WELDS SMOOTH



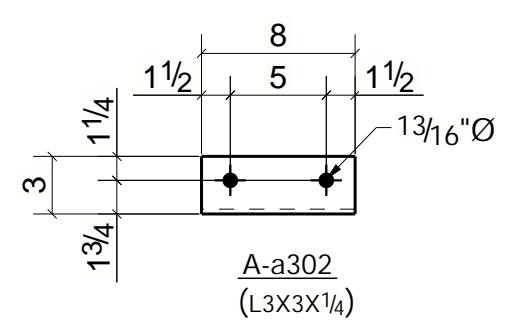
SECTION A-A



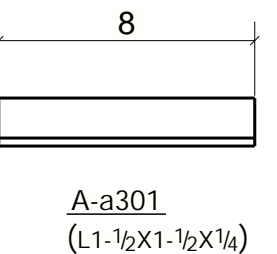
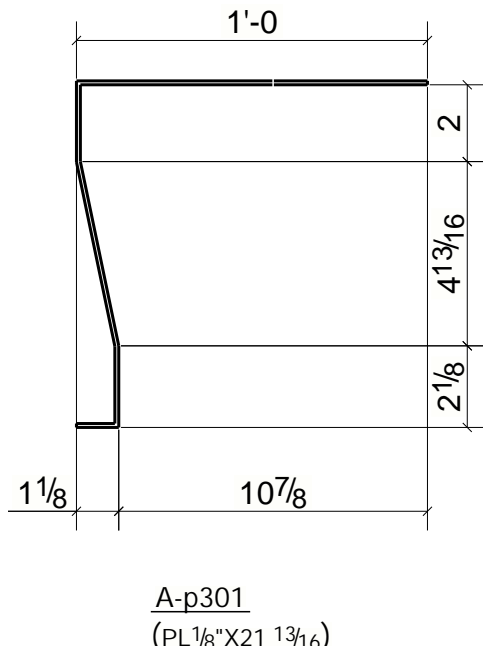
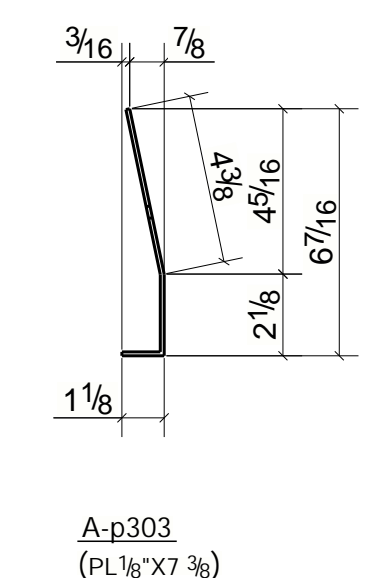
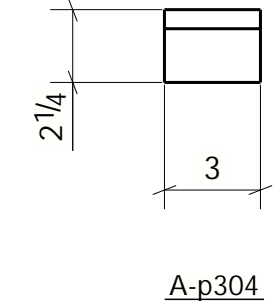
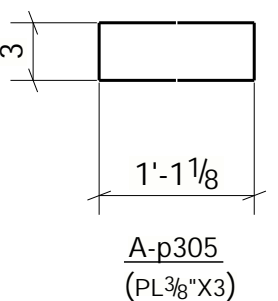
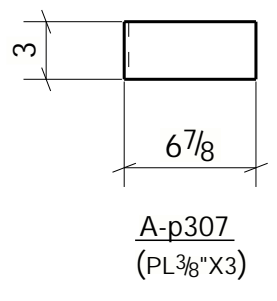
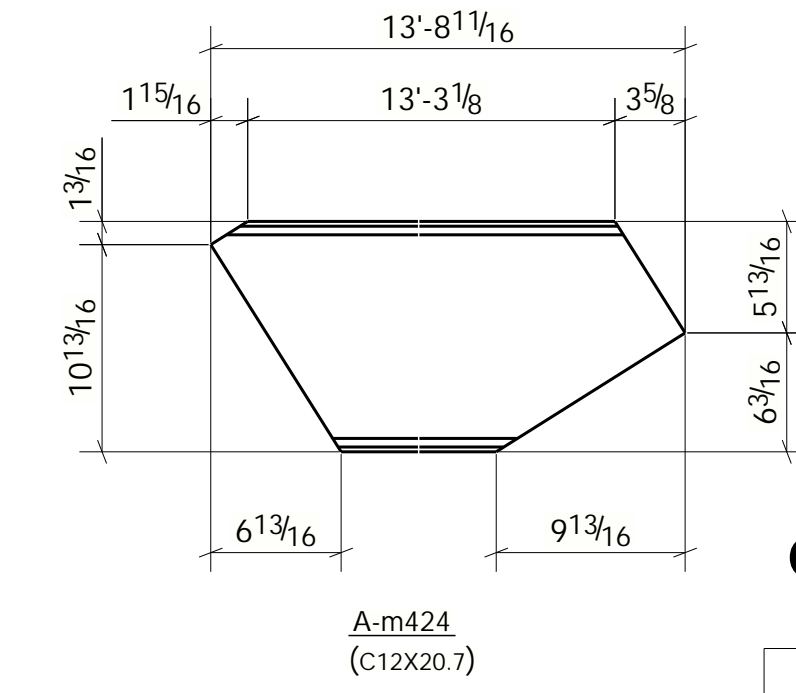
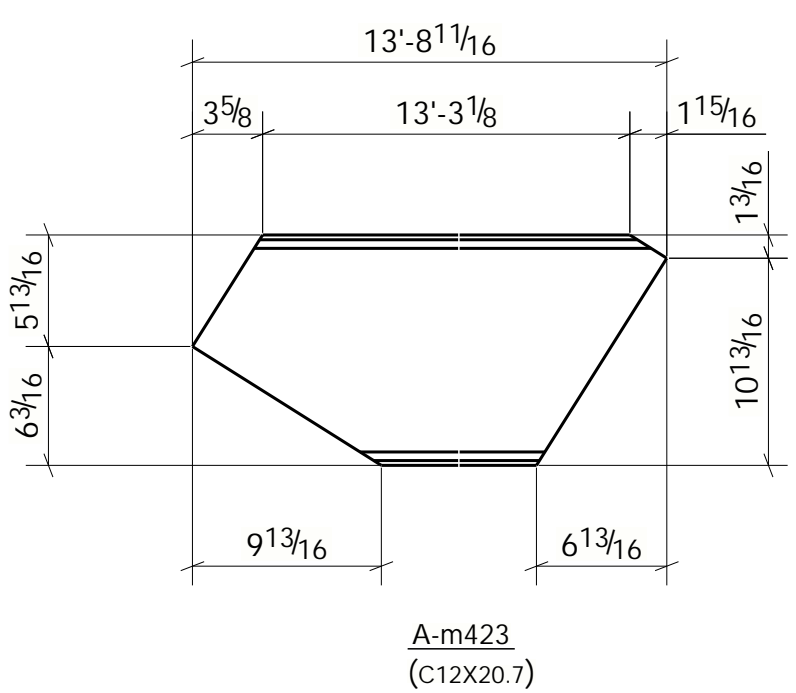
SECTION B-B



DETAIL 3
REF: B4/S581



W.P. - WORK POINT
 CL - CENTER LINE
 C.S. - CONNECTING SIDE
 RD - RUN DIMENSION



SYMBOLOLOGY
 N/S - NEAR SIDE MARK
 F/S - FAR SIDE MARK
 B/S - NEAR SIDE BOLT MARK
 E.I. - EXCEPT INDICATED
 - NEAR SIDE HOLE
 - FAR SIDE HOLE
 EL - LEVEL

ONE - STAIR - A-S301

REV.	DATE	DESCRIPTION
B		FOR INFORMATION
A		FOR APPROVAL



CUSTOMER LOGOTYPE

NOTES:
 REFERENCE DRAWINGS:
 THIS CONFIDENTIAL DOCUMENT IS THE PROPERTY OF XXXXX AND SHALL NOT GIVEN, COMMUNICATED, COPIED OR REPRODUCED EXCEPT WITH OUR WRITTEN PERMISSION.

PROJECT: STAIR #3	DRAWN BY:	REVISED BY: JALC
LOCATION:	ISSUE DATE:	DATE:
CLIENT:	ESCALA: NO	PRIORITY: 0
DESCRIPTION: STAIR	DRAWING No./DWG No.	REV.
	A-S301	B